

French CFHTLS Users Meeting
Jean-Charles Cuillandre

Status of CFHTLS

The CFHTLS at CFHT

- Aftermath of the 6.7 mag. earthquake
- The instrument
- Observations
- Data processing

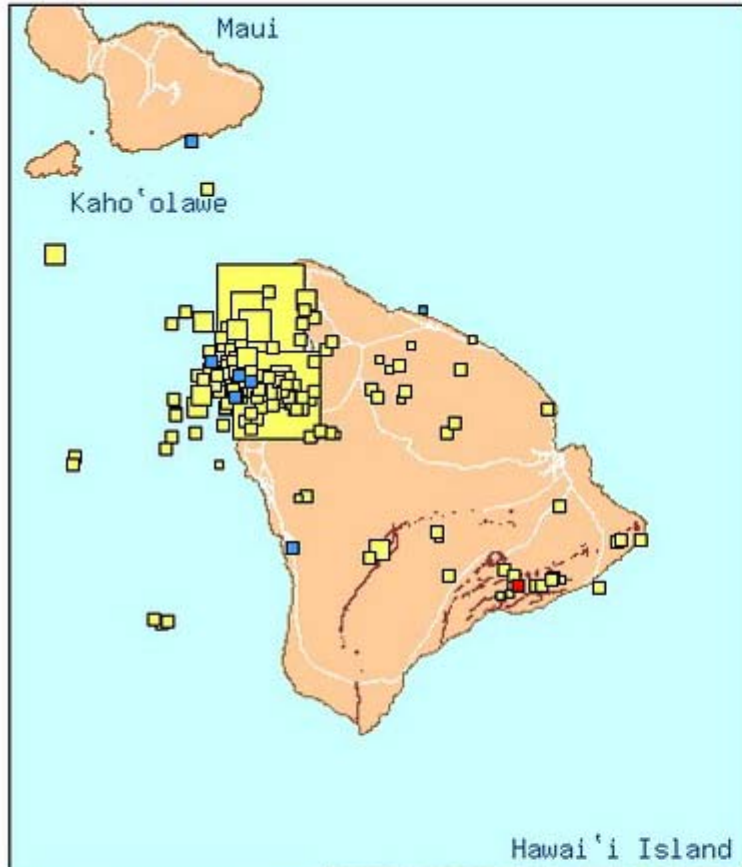


NATIONAL RESEARCH
COUNCIL CANADA
CONSEIL NATIONAL
DE RECHERCHES CANADA

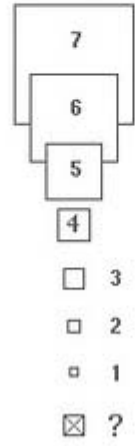


Aftermath of the 6.7 mag. earthquake

Earthquakes from the Hawaiian Volcano Observatory Network



MAGNITUDE



- LAST 2 HOURS
- LAST 2 DAYS
- LAST 2 WEEKS



Tue Oct 24 16:00:04 HS

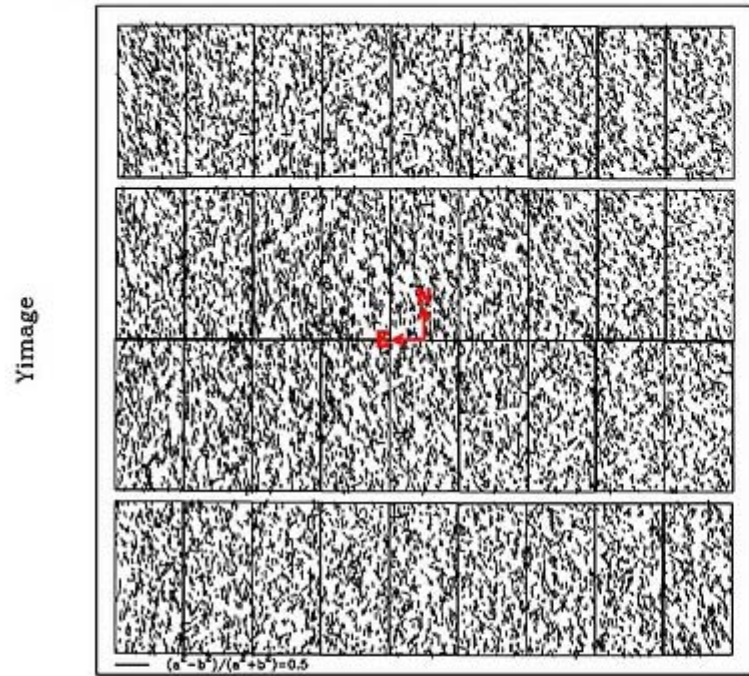


Aftermath of the 6.7 mag. earthquake



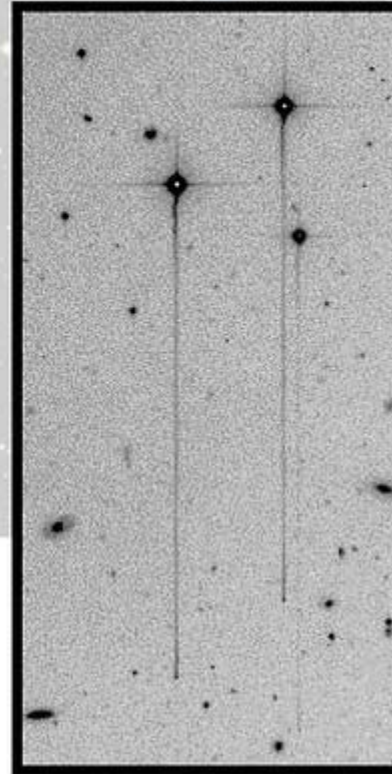
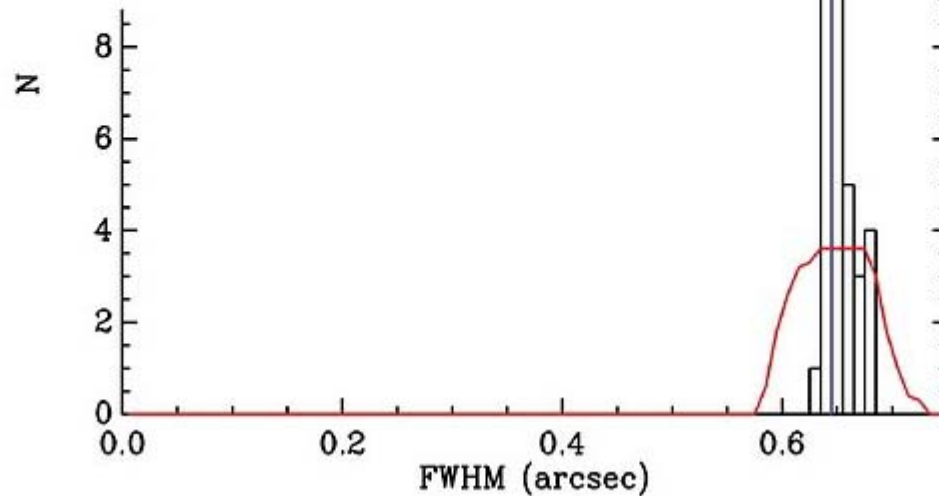
Aftermath of the 6.7 mag. earthquake

875732p PSF orientation and ellipticity map - filter i.MP9701



ing histogram

Ximage



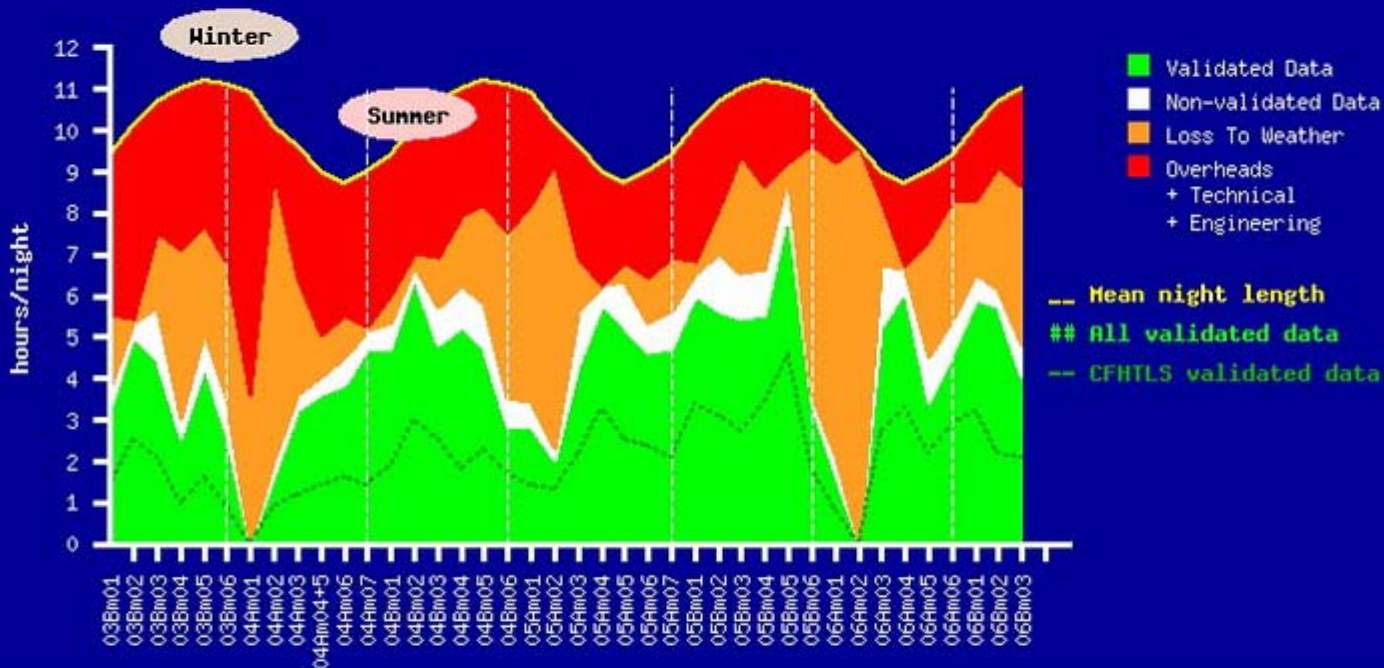
2006 : the worst winter on records on Mauna Kea

CFHT's MegaPrime Observing Statistics

Starting June 2003, with 6 to 7 runs per semester since (m01->m06/7)

"A" semesters = February to July / "B" semesters = August to January

The night length varies from 8.7 hr (June) to 11.2 hr (December)



Period	Runs	Nights	Validation	CFHTLS	Unvalidated	Weather	Overheads	Night Length
All	40	17.2	4.2	49%	0.7	2.5	32%	10.1
03B	6	16.8	3.7	43%	0.7	2.3	48%	10.6
04A	6	18.7	2.8	39%	0.4	2.6	36%	9.5
04B	6	19.0	4.8	46%	0.8	1.7	38%	10.6
05A	7	16.4	4.2	52%	0.8	2.3	32%	9.5
05B	6	16.3	5.7	56%	0.8	2.1	26%	10.8
06A	6	15.8	3.5	57%	0.7	4.0	18%	9.3
06B	3	18.0	5.2	48%	0.6	2.9	25%	10.6

CFHTLS Global Statistics

Survey Component :	Deep	Wide	Very Wide	Pre-Survey
Total integration [validated exp.]:	737.4 hr	492.1 hr	217.0 hr	36.4 hr
Number of validated exposures:	6402	3302	4759	596
Current fraction of CFHTLS :	51.0 %	34.0 %	15.0 %	n/a
Target fraction of CFHTLS :	44.0 %	34.0 %	22.0 %	n/a

Wide W4	Ratio (%)	itime(hr) = itime(sec) x Nexp	Med Avg Min Max Dsp	A.	Bkg.	Ph.
u	13.7	9.3 = 600 x 56	0.85 0.86 0.59 1.30 0.16	1.10	0.35	91
g	20.6	14.0 = 500 x 101	0.81 0.80 0.55 1.02 0.09	1.20	1.87	90
r	6.7	4.6 = 500 x 33	0.68 0.71 0.48 1.00 0.14	1.39	2.96	100
i	33.7	22.9 = 615 x 134	0.68 0.69 0.47 0.96 0.11	1.18	4.77	83
z	25.2	17.2 = 600 x 103	0.65 0.66 0.44 0.87 0.12	1.22	5.87	81

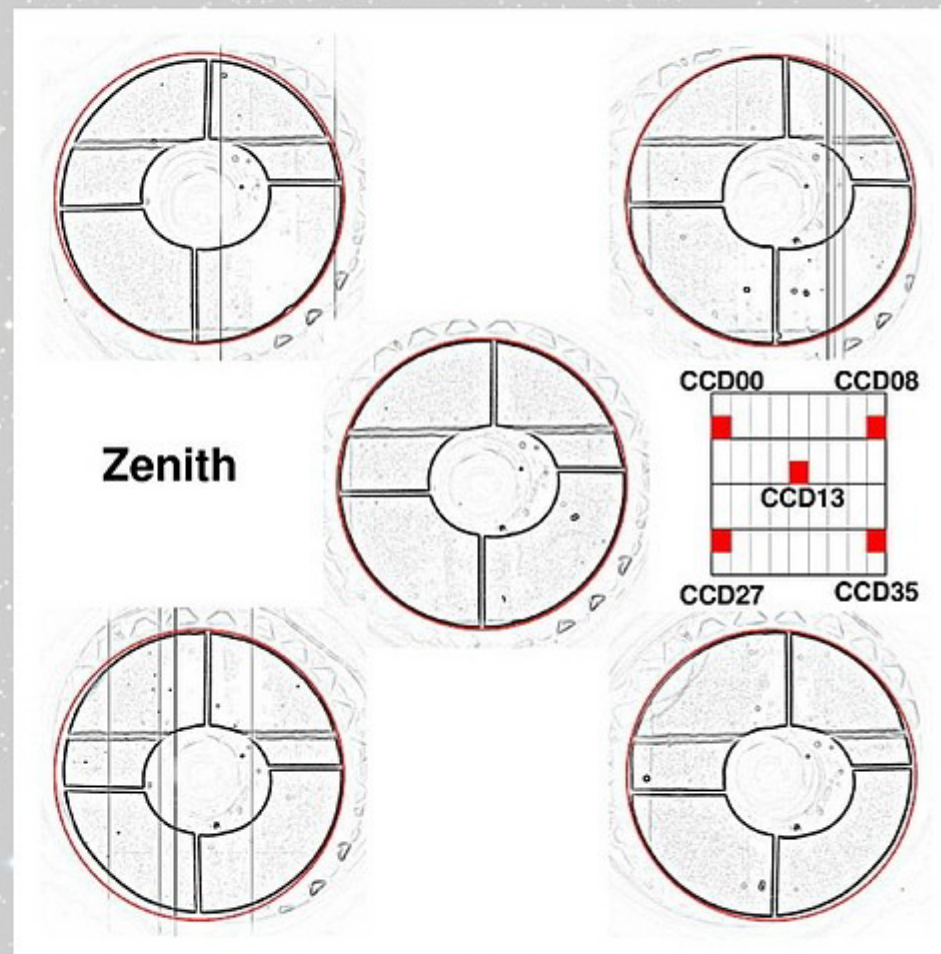
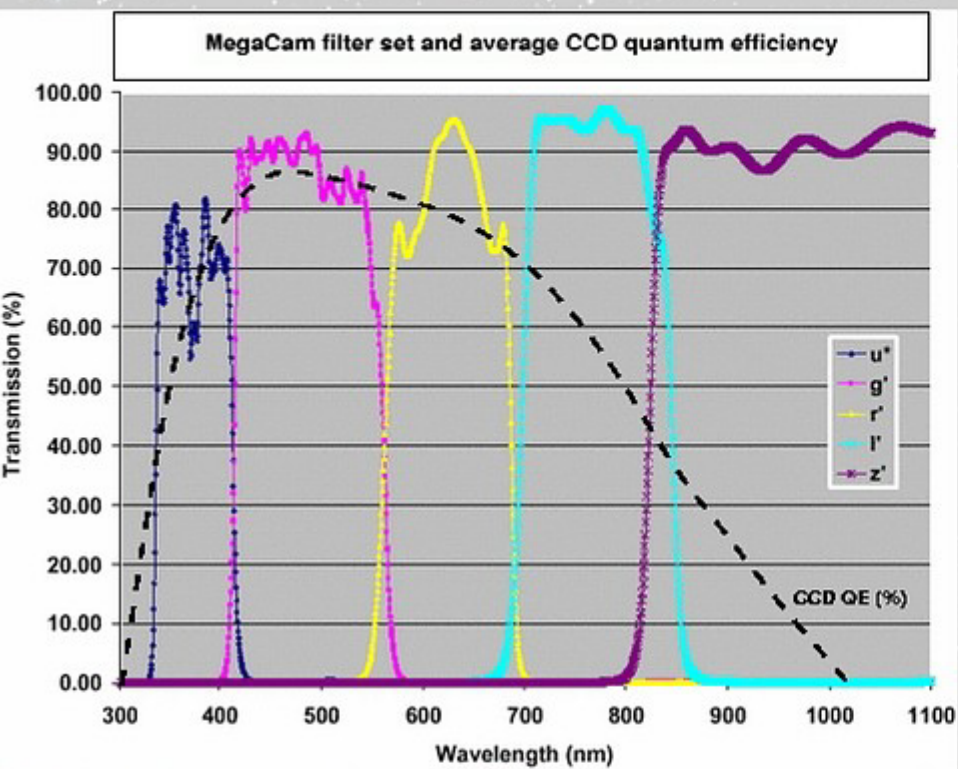


The CFHTLS and PI Right Ascension competition

MegaPrime/MegaCam – 2007A Proposals RA pressure

RA	< 0.6"	< 0.8"	< 1.0"	< 1.2"	> 1.2"
00		4 (C22) 7 (T13)	0.8 (C26)	10 @ range (C2)	
01		4 (C22) 7 (T13)	2 (C26)	10 @ range (F9) 8 @ range (F35)	
02			2 (C26)		
03		4 (C22) 7 (T13)	0.4 (C26)		
04			0.4 (C26)		
05	1 (T11)		0.8 (C26)		
06			13 (F15)		
07			0.4 (C26)		
08					
09	1.3 (O2)	1.5 (F8) 10 (C24)	39 (LS)		
10	1.3 (O2)	4 (C22) 7 (T13) 3 (C23) 1.5 (F8) 1 (C15)	37 (LS) 1.2 (C26) 2 (F36)		
11	1.3 (O2)	4 (C22) 7 (T13) 4 (F3) 1.5 (F8) 1 (C15)	1.6 (C26) 2 (F36)	8 (C4)	
12	4.0 (O2)	10 (T17) 3 (C23) 3.0 (F8) 1 (C15)	0.8 (C26) 2 (F36) 9 (C7)		
13	1.3 (O2)	4 (C22) 7 (T13) 1 (C15)	5 (C26) 2 (F36) 9 (C7)	6 (F1)	
14	1.3 (O2)	3 (C23) 1 (C15)	153 (LS) 9 (C7) 0.4 (C26)	2 (F36)	
15		4 (C22) 7 (T13) 3 (O7) 13 (C21) 15 (F24)	1.6 (C26) 2 (F36) 9 (C7)		
16		8 (C22) 7 (T13) 10 (C24)	2 (C26) 2 (F36) 9 (C7)		
17		3 (C23) 13 (F18)	2 (F36)		
18			10 (O4)		50 (F25)
19					
20			0.4 (C26)		
21		4 (C22) 7 (T13) 15 (C15)	0.8 (C26)		
22		15 (C15)	53 (LS)		
23		8 (C22) 7 (T13) 15 (C15)	1.2 (C26)		

Instrument : preventive maintenance & stability controls



Data processing : investigations on Elixir's recipes limitations

