

# Filtres morphologiques connectés

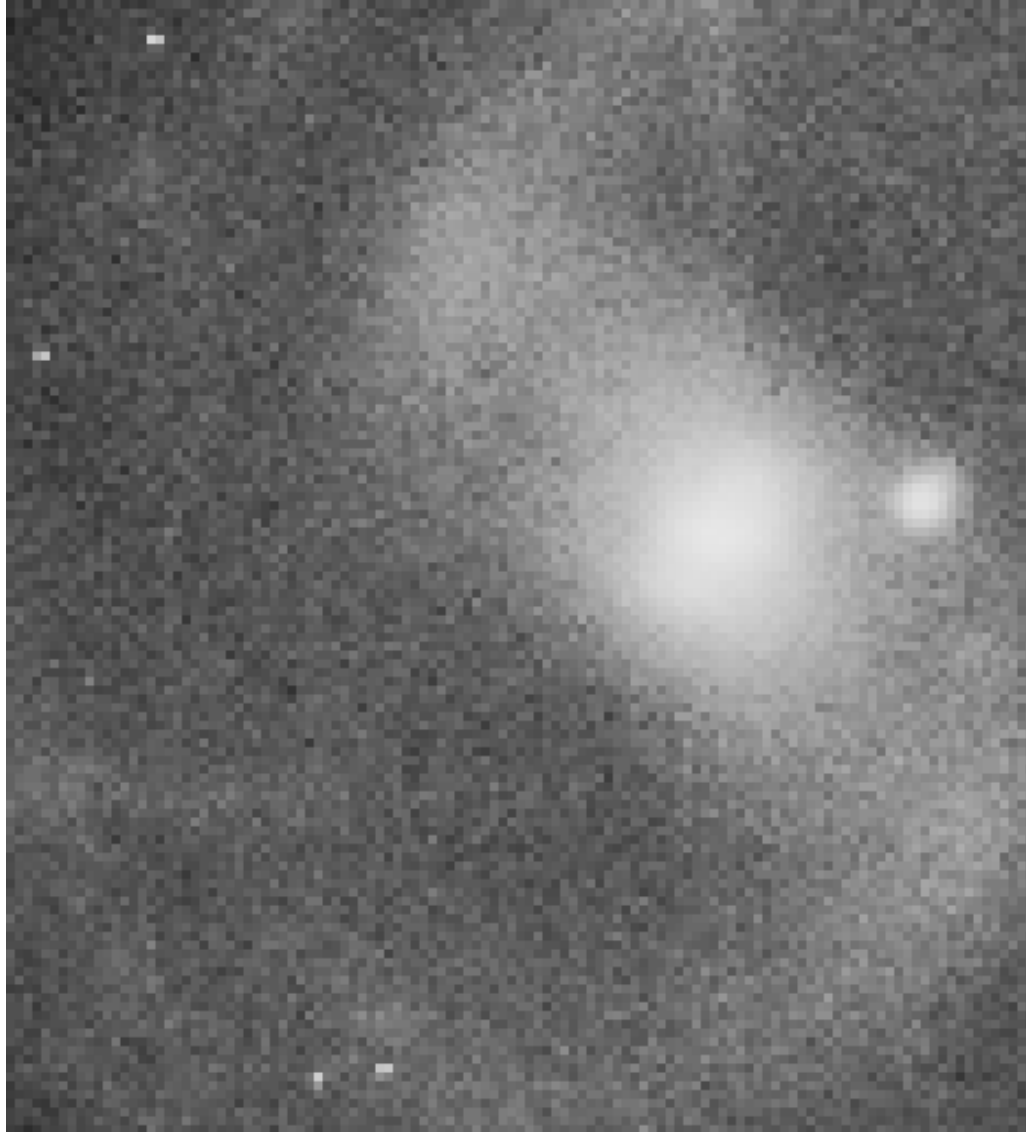
Thierry Géraud

EPITA-LRDE

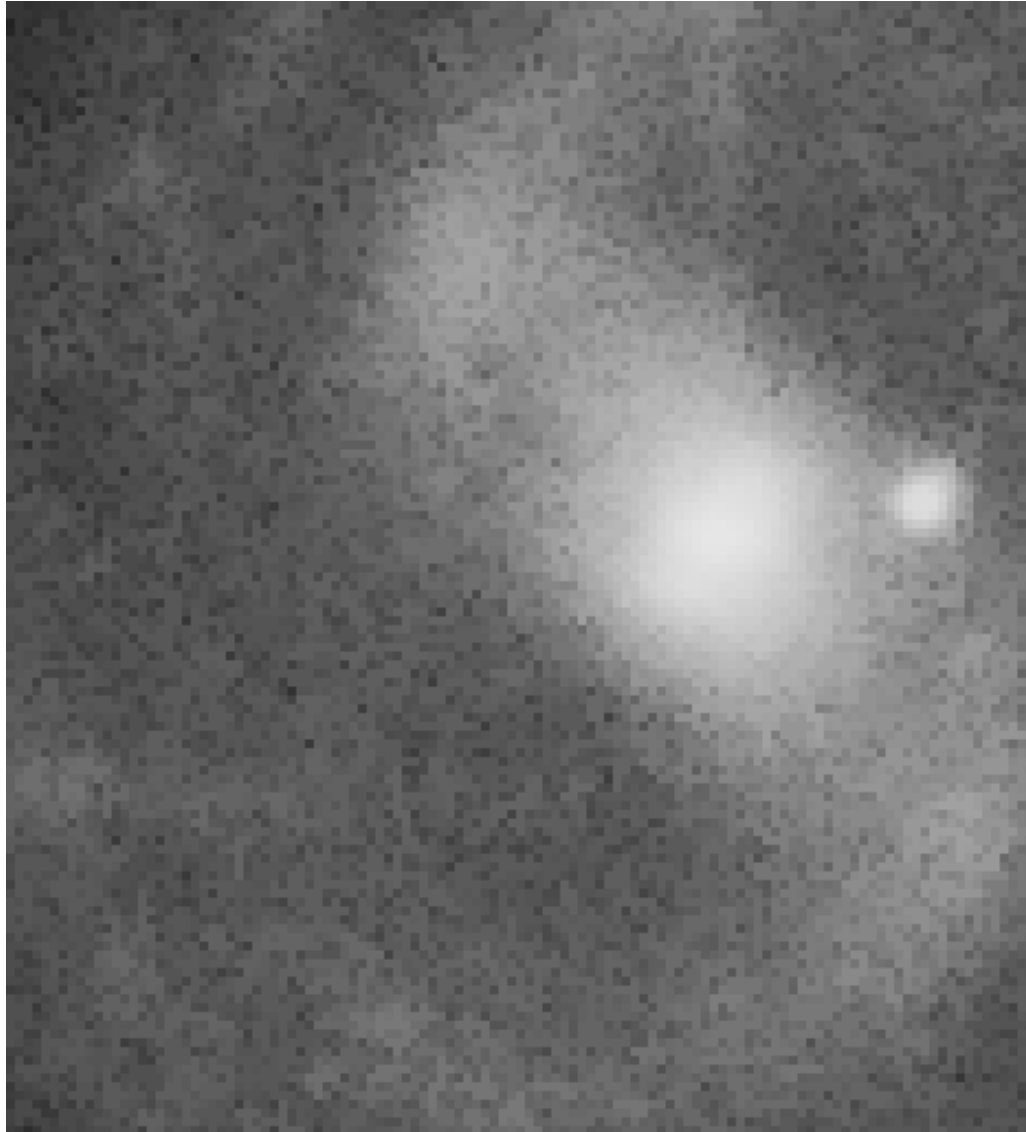
# Suppression des étoiles



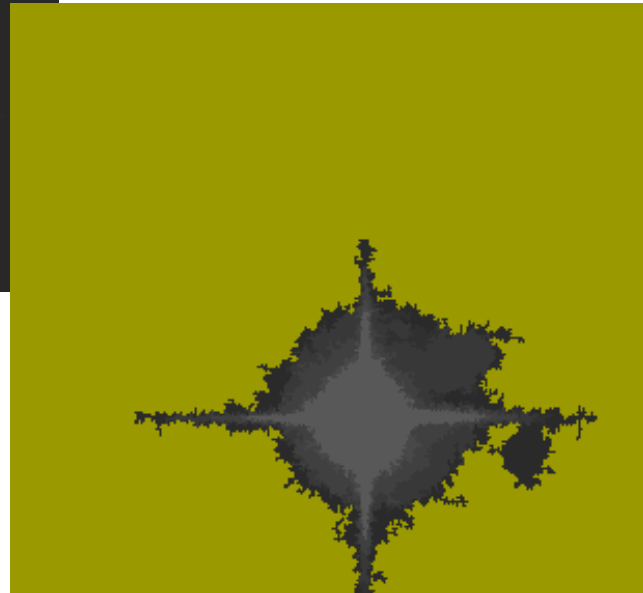
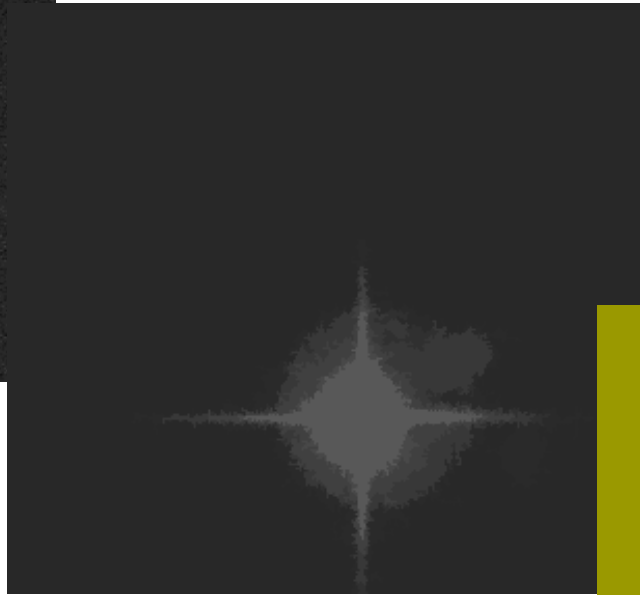
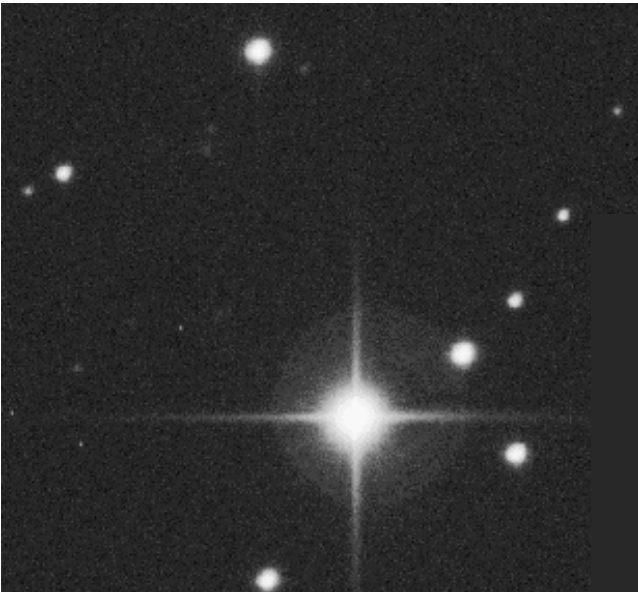
# Suppression des étoiles (avec)



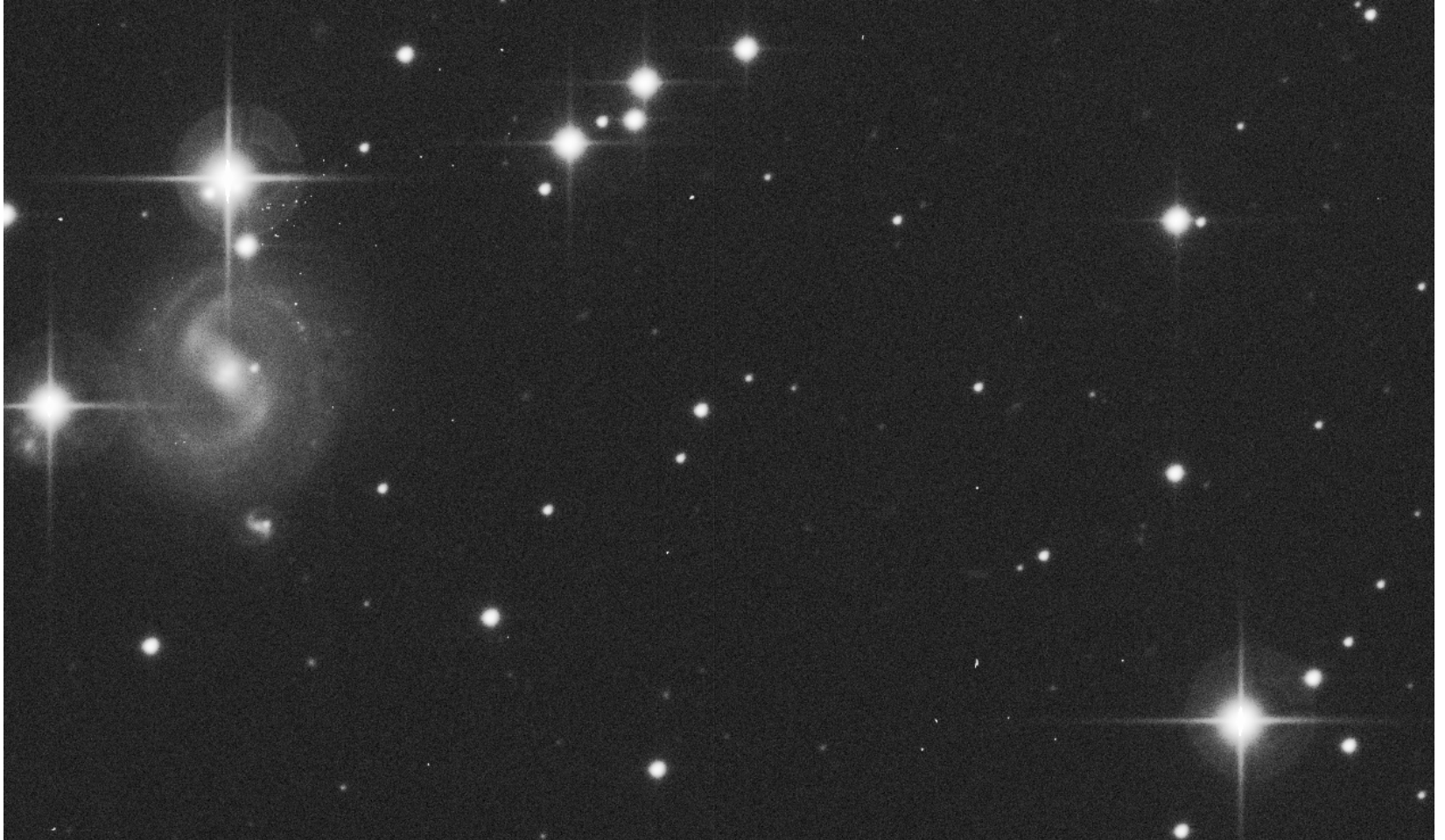
# Suppression des étoiles (sans)



# Identification de halos



# Identification de halos



# Identification de halos



# Suppression du fond

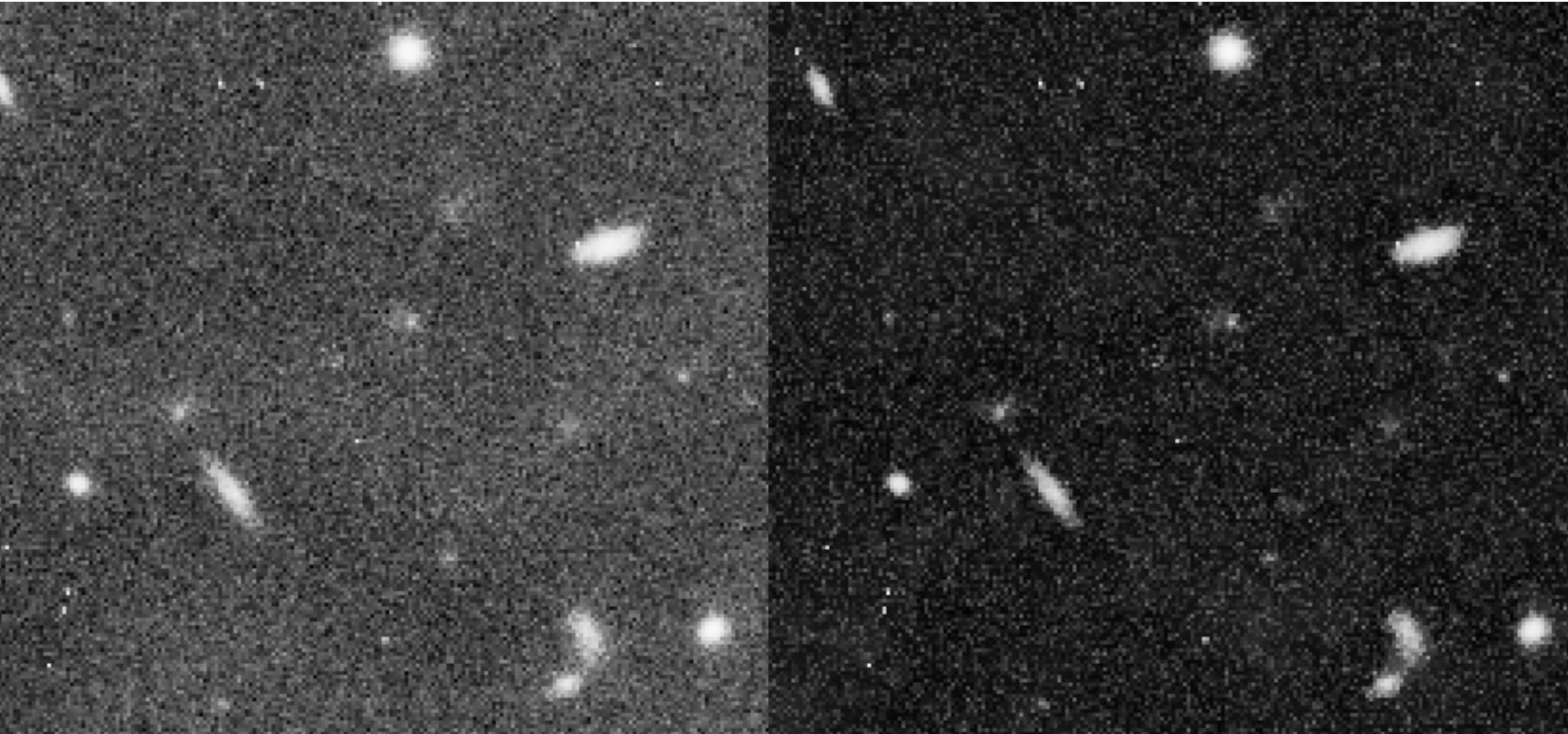




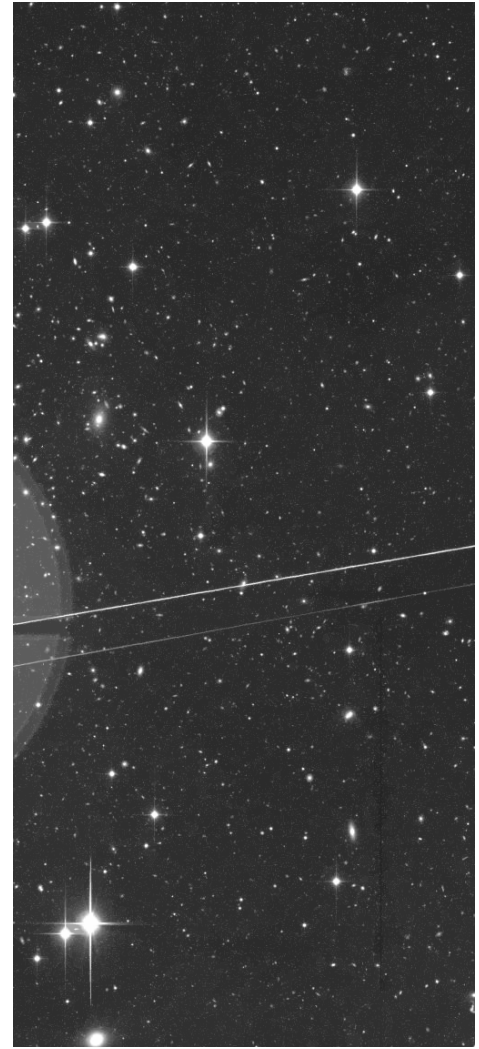
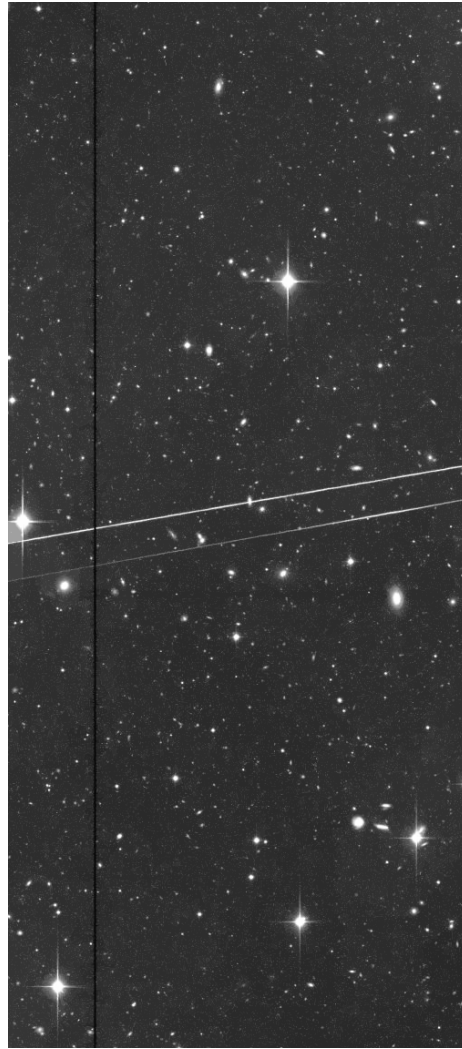
# Suppression du fond



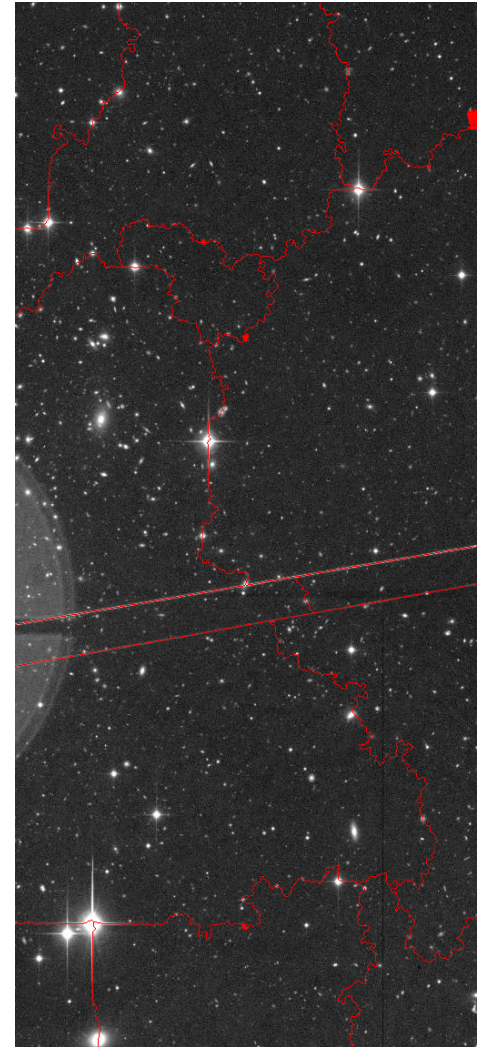
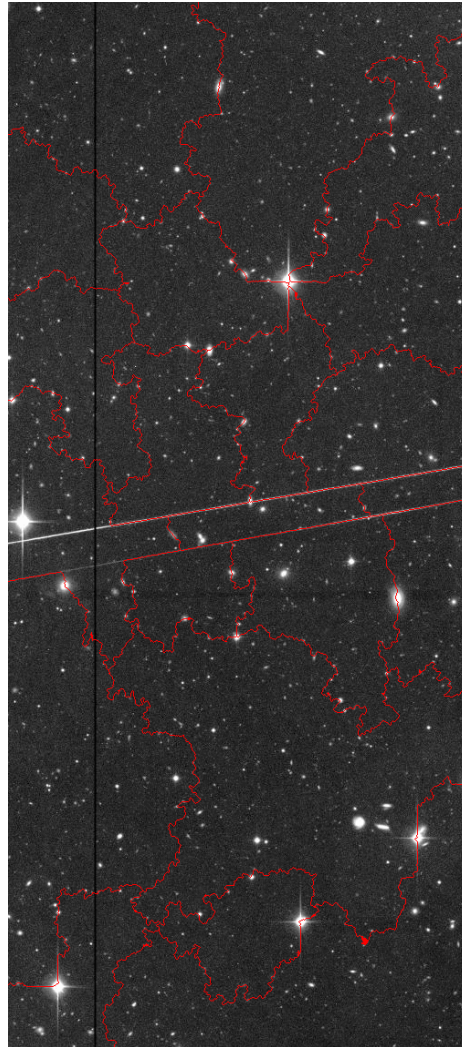
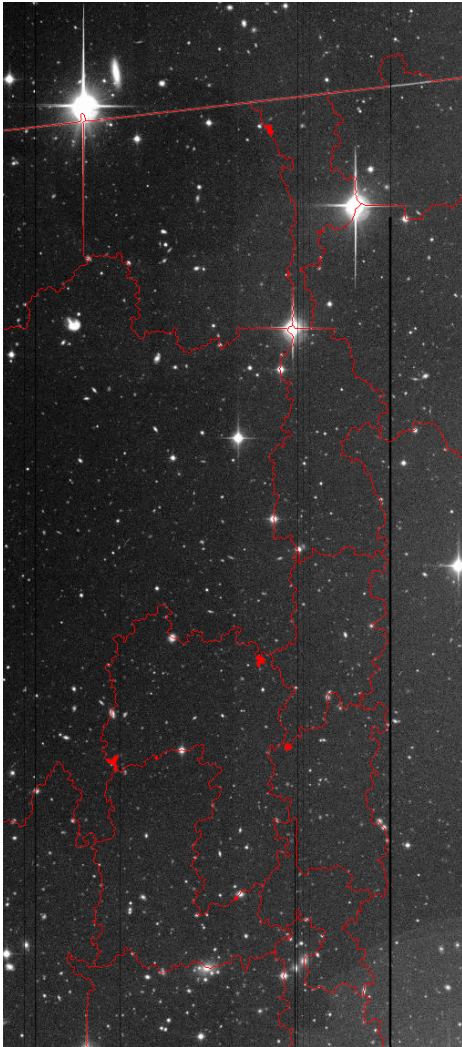
# Suppression du fond



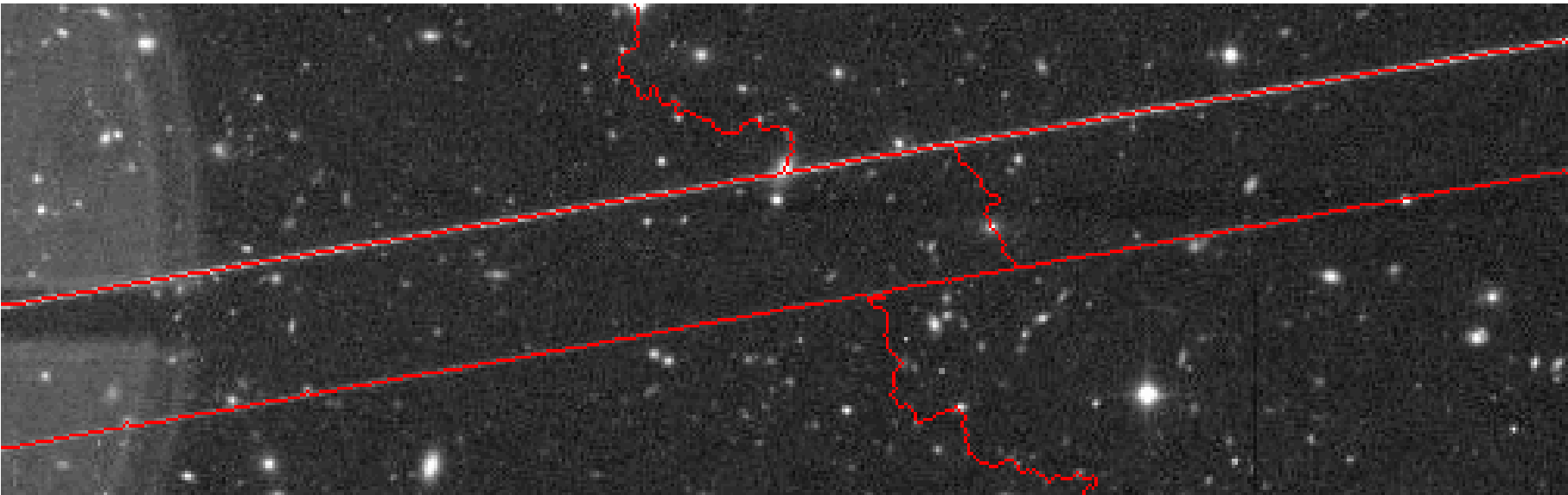
# Localisation de satellites



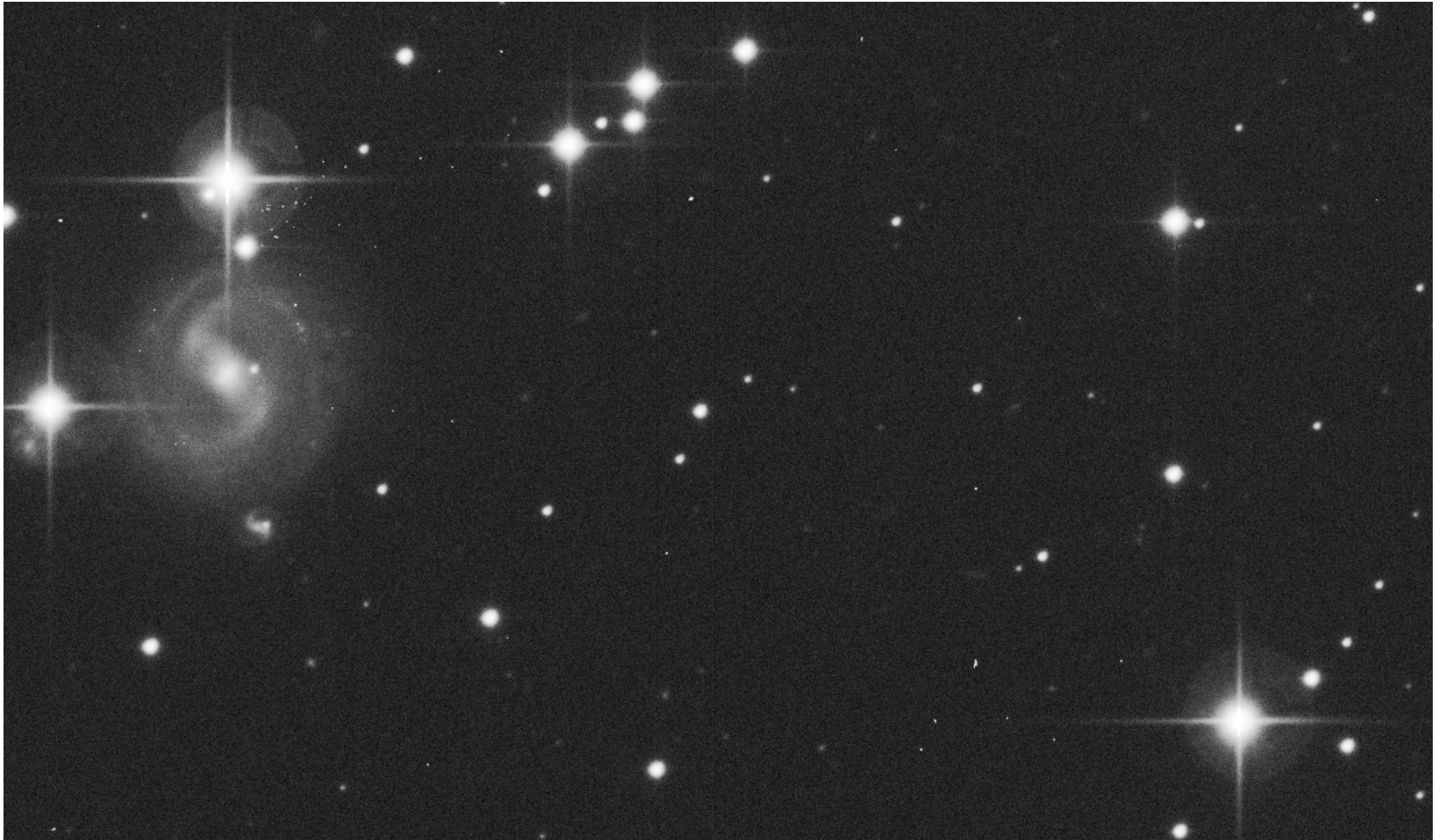
# Localisation de satellites



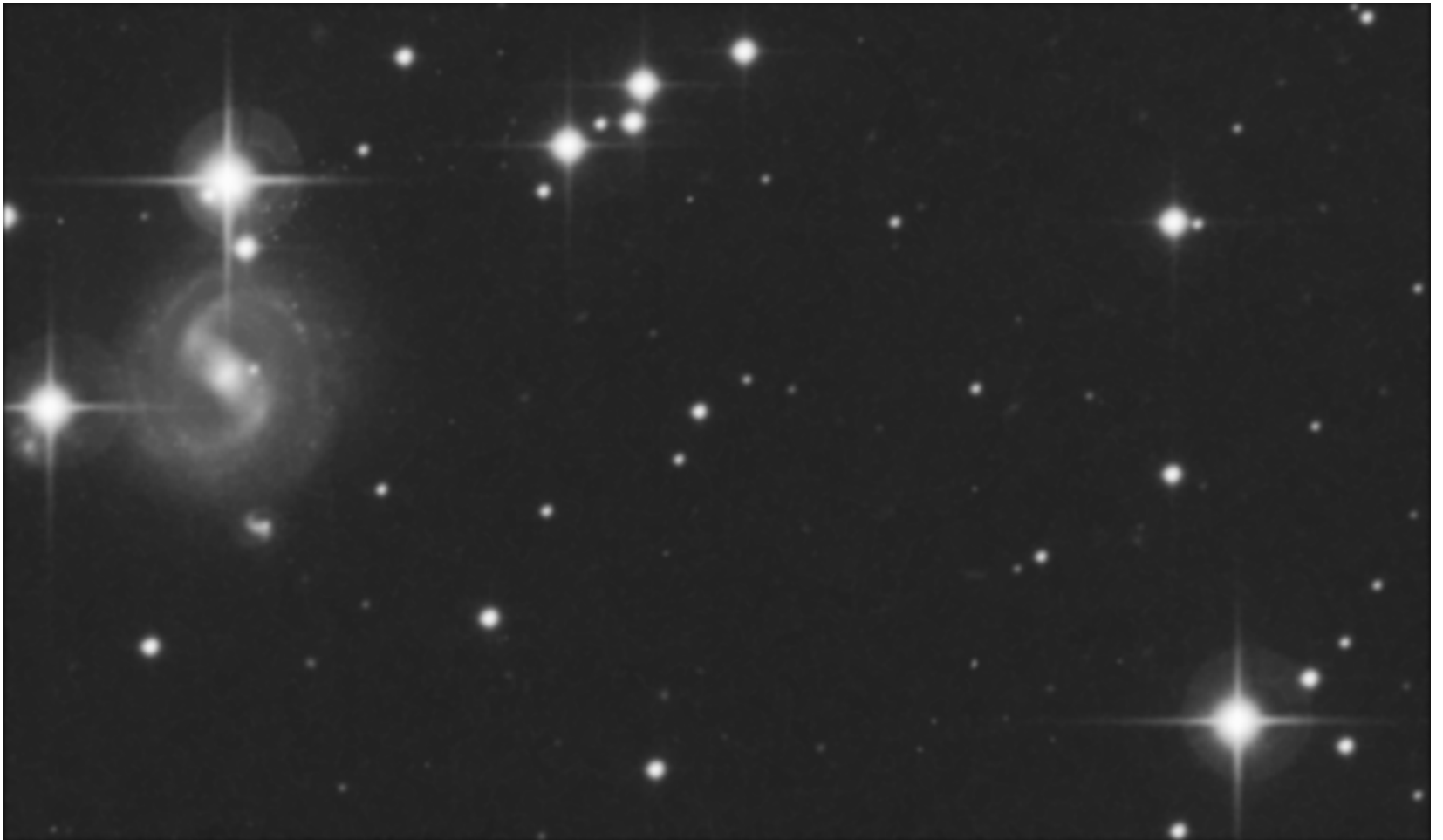
# Localisation de satellites



# Identification de « spots »



# Identification de « spots » (régularisation)



# Identification de « spots » (recherche de primitives)

